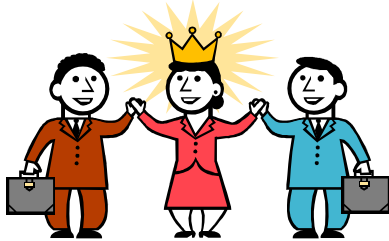




### Win A Free Registration To the 2008 CCABC Conference!



The CCABC Board of Directors is making plans for the future of YOUR Association! But planning must be member driven so we need YOUR input! We need to know what you think the CCABC's "Strengths, Weaknesses, Opportunities and Threats" (SWOT) may be.

Please take a few minutes to **complete the enclosed survey** which will help us assess your Association or go to the home page of the CCABC website [www.ccabc.org](http://www.ccabc.org) to the electronic version of the survey.



All members who complete the survey will be entered into a draw to **WIN a complimentary registration to attend the 2008 Conference which will be held April 16, 17 and 18, 2008 at the Sheraton Wall Centre in Vancouver!**

### News From the BPCPA

#### CCABC News

#### In This Issue ...

Member Survey! Respond and Win!!

News From The BPCPA Download or order your Legislation Guide Today

CANA 2006 Disposition Highlights

Grave Images Symbolism in the Cemetery

An Invite to Golf at the FSABC golf tournament!

In 2001, the BC government announced its intention to review all regulations which impact business. As a result of this work in 2004 two new pieces of consumer protection law were passed.

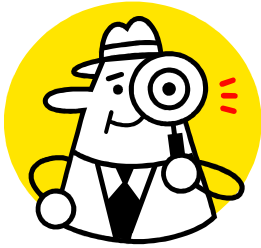
The first was the [Business Practices and Consumer Protection Act \(BPCPA\)](#) and the second was the [Cremation, Interment and Funeral Services Act \(CIFSA\)](#) that deals with some specific aspects of the cemetery and funeral service industry which did not fit with the financial and transactional nature of the BPCPA. The [Business Practices and Consumer Protection Authority](#) is responsible for the oversight and enforcement of the legislation.

On June 28, 2007, the CIFSAAG (Cemetery and Funeral Services Advisory Group) met to bring forward any recommendations to the BPCPA.

A general update on licensing and inspection activities offered the following:

- The new credit card payment option continues to assist many businesses in submitting required documents and payments in a more timely fashion;
- Renewals for commercial places of interment and crematoria were sent out in late May with a renewal deadline of June 30, 2007. The renewal process was proceeding smoothly at the time of reporting;
- Increased focus on places of interment inspections over the past several months. Specific attention has been given to municipal, private, religious and fraternal run facilities. Noticeable issues with care funds, interment rights contracts, record keeping and bylaws.
- BPCPA is working on developing more awareness of the requirements.

This includes distribution of the place of interment inspection guides as part of the inspection process, and participating with the CCABC on a series of educational seminars being planned for the Fall of 2007.



The inspections team currently has three cemetery and three funeral provider complaint files open and under review. One crematoria complaint was reviewed and concluded as unfounded.

Log-on to the CCABC website [www.ccabc.org](http://www.ccabc.org) and click on the Regulatory Authority link to access information regarding the cemetery and crematorium industry including:

- Application and other commonly requested forms
- Cremation, Interment and Funeral Service Advisory Group
- Current licensing fees and related charges
- Industry News

### **Legislation guide for cemetery and crematorium operators -**

The BPCPA has produced and released an information guide for BC cemetery and crematorium operators. How do I obtain a copy of the guide?

**Download** the Guide for Cemetery and Crematorium Operators from the [www.bpcpa.ca](http://www.bpcpa.ca)  
Or contact the CCABC office Toll Free at 1-866-587-3213 and we will mail you a copy!

## **Cremation Association of North America 2006 Disposition Report Highlights**

**This study, conducted on behalf of the Cremation Association of North America (CANA), was designed as a way to understand the industry standards in the cremation process.**

This study was last conducted in 1997. In May 2006, two surveys were created and mailed out to Free-standing Crematories and/or Cemeteries with Crematories and Funeral Homes/Societies With and Without Crematories. Respondents were asked to track the characteristics of their next 50 cremation cases or the number of cremations performed in a 30 day period. In total, 185 forms out of the 1,028 mailed were submitted, representing 5,535 cremations. Here are some of the highlights:

- Fifty-three percent of responding firms indicated they had two or more cremation units at their site.
- Among those funeral homes responding to the 2006 Disposition survey, fifty-six percent classified themselves as a funeral home with crematory, followed by eighteen percent who said their business is a crematory only.
- Fifty-eight percent of cemetery respondents stated they are a cemetery with a crematory and funeral home.
- Sixty-seven percent of participating firms have a viewing area at their facility. Of those, an average of 10% viewed cremations in the past 12 months.
- The majority of cemetery respondents have a columbarium and urn garden at their facility (91% and 66%, respectively). On the other hand, only forty-two percent of cemetery participants have a scattering area on the grounds of their facility.
- With respect to identifying the body prior to cremation, only twenty-two percent indicated they open the cremation casket/container before beginning the cremation process.

- **Almost three quarters (74%) of respondents use a disk as a permanent identification device during cremation**, followed by sixteen percent who do not place identification devices in the chamber during cremation. Half a percent had ceramic plaques.
- Ninety-seven percent of respondents performing cremations mechanically process the cremated remains and close to one hundred percent (99%) place the cremated remains in a plastic bag within the container or urn.
- Nearly three quarters of funeral home participants with crematories (74%) also perform cremations for others, with the most (70%) charging between \$151 and \$250 for this service.
- Thirty-one percent of responding firms charge extra for obese bodies (over 300lbs).
- **Almost three quarters (71%) accept payment by credit card.**
- None of the respondents indicated they cremate animals at their facility.
- Just over half (54%) of cremations conducted by the responding firms were Male and the majority (90%) were of Caucasian descent. Five percent of cremations were of African American descent, three percent were Hispanic and two percent were Asian. Sixty-three percent were classified as Protestant. Not surprisingly, the average age at cremation was 70 years, with a maximum of 105. Just under half (48%) fell between the ages of 75 and older.
- Sixty-one percent of the cremations performed by responding facilities were direct cremations (no service), this equates to 476,151 cremations in 2005. Only sixteen percent were classified as pre-need cremations (contracted for) resulting in 124,484 cremations.
- Of those facilities indicating that a funeral service was held prior to cremation (21%), ninety percent said the body was present at the service. Ten percent indicated there was a rental casket.
- Most (96%) of the bodies cremated by responding firms were cremated in a cremation container or casket.
- Six percent said keepsake items were purchased, fifty-seven percent of which were keepsake urns. Sixty-one percent indicated an urn was purchased or supplied.
- Temporary containers were most commonly made of plastic (68%), followed by cardboard (28%).
- Of those being cremated at funeral homes/societies, eighty percent of the remains are returned to the family, nineteen percent are delivered to the cemetery and two percent are not picked up. Thirty-nine percent of those returned to the family will be kept at home, thirty-seven percent will be buried in a cemetery and 22 percent will be scattered.
- Seventy-eight percent of cremated remains from cemeteries with crematories are delivered to funeral homes/societies, followed by ten percent which are returned directly to the family.
- If scattered, sixty percent of remains are scattered on water, while forty percent are scattered on land.
- Memorial services were held after the cremation fifty-seven percent of the time. The most popular location for the memorial service was at a religious site (37%), followed by funeral homes (34%).



### *CANA 89th Annual Convention*

**August 15-18, 2007**

**Fairmont Hotel**

**San Francisco, California**

**For information and conference registration visit the  
CANA website [www.cremationassociation.org](http://www.cremationassociation.org)**

## GRAVE IMAGES – Symbolism At The Cemetery

Did you ever wonder or has a family ever asked you about the interpretation of an image or symbol on a grave marker? These are a few of many motifs found on gravestones with some of the commonly held interpretations of their symbolism

- 
- Anchor/Ships -- Hope or Seafaring profession
  - Angel, Flying- Rebirth; Resurrection.
  - Angel, Trumpeting- Resurrection.
  - Angel, Weeping- Grief and Mourning.
  - Arch - Victory in death.
  - Arrow- Mortality.
  - Bird- Eternal life.
  - Bird, Flying- Resurrection.
  - Book-Representation of a holy book: i.e. the Bible.
  - A pair of Holy Books on Mormon (LDS) headstones indicates the Bible and Book of Mormon
  - Three Holy Books on Mormon headstones indicates the Bible, Book of Mormon, and Doctrine & Covenants -- all of which are scripture to the LDS Church.
  - Breasts (Gourds, Pomegranates) - Nourishment of the soul; the church.
  - Bouquets/Flowers -- Condolences, grief, sorrow
  - Broken Column -- Loss of Head of Family
  - Broken Ring -- Family Circle Severed
  - Buds/Rosebud -- Morning of Life or Renewal of Life
  - Bugles -- Resurrection and the Military
  - Butterfly -- Short-lived - Early Death
  - Candle being Snuffed -- Time, mortality
  - Cherub -- Angelic
  - Coffin, Father Time, Picks/Shovels, Darts -- Mortality
  - Columns and Doors- Heavenly entrance.
  - Corn -- Ripe Old Age
  - Cross -- Emblem of Faith
  - Crossed Swords -- High-ranking military person
  - Crown- Glory of life after death.
  - Cup or Chalice- The Sacraments.
  - Dove- Purity; Devotion.
  - Dove, Flying- Resurrection.
  - Drapes- Mourning; Mortality.
  - Flame or Light- Life; Resurrection.
  - Flower- Fragility of life.
  - Flower, Severed Stem- Shortened life.
  - Flying Birds -- Flight of the Soul
  - Fruits -- Eternal plenty
  - Full-Blown Rose -- Prime of Life
  - Garland or Wreath- Victory in death.
  - Grim Reaper- Death personified.
  - Hand, Pointing Up- Pathway to heaven; Heavenly reward.
  - Hands, Clasped- The goodbyes said at death.
  - Hand of God Chopping -- Sudden Death
  - Handshakes -- Farewell
  - Harp -- Praise to the Maker
  - Heart- Love; Love of God; Abode of the soul; Mortality.
  - Horns -- The Resurrection
  - Hourglass- Passing of time.
  - Hourglass, Flying- Time flies.
  - Imps -- Mortality
  - Ivy -- Friendship and Immortality
  - Lamb- Innocence.
  - Laurel ---Fame or Victory
  - Lily or Lily of Valley -- Emblem of Innocence and Purity
  - Lion- Courage; The Lion of Judah.
  - Morning Glory -- Beginning of Life
  - Oak Leaves and Acorn -- Maturity, Ripe Old Age
  - Open Book/ Bible -- Deceased Teacher, Minister, etc.
  - Pall- Mortality.
  - Palm Branch -- Signifies Victory and Rejoicing
  - Pick- Death; Mortality.
  - Poppy -- Sleep
  - Portals -- Passageway to eternal journey
  - Rod or Staff- Comfort for the bereaved.
  - Rooster- Awakening; Resurrection.
  - Roses -- Brevity of earthly existence
  - Scythe- Death; The divine harvest.
  - Seashell- Resurrection; Life everlasting; Life's pilgrimage.
  - Sheaf of Wheat -- Ripe for Harvest, Divine Harvest, Time
  - Skull- Mortality.
  - Skull/ Crossed Bones- Death.
  - Skeleton- Life's brevity.
  - Snake (Tail in Mouth)- Everlasting life in heaven.
  - Spade- Mortality; Death.
  - Stars and Stripes Around Eagle -- Eternal Vigilance, Liberty
  - Sun Rising- Renewed life.
  - Sun Shining-Life everlasting.
  - Sun Setting- Death.
  - Thistle- Scottish descent.
  - Thistles -- Remembrance
  - Tombs -- Mortality
  - Torch Inverted -- Life Extinct
  - Tree- Life.
  - Tree Sprouting- Life everlasting.
  - Severed Branch- Mortality.
  - Tree Stump- Life interrupted.
  - Tree Stump w/Ivy -- Head of Family - Immortality
  - Tree Trunk- Brevity of life.
  - Tree Trunk Leaning- Short interrupted life.
  - Trumpeters -- Heralds of the Resurrection
  - Urn- Immortality (ancient Egyptian belief that life would be restored in the future through the vital organs placed in the urn).
  - Urn with Wreath or Crepe -- Mourning
  - Urn with Blaze -- Undying Friendship
  - Weeping Willow Tree- Mourning; Grief; Nature's lament.
  - Willows -- Earthly Sorrow
  - Winged Face- Effigy of the deceased soul; the soul in flight.
  - Winged Skull- Flight of the soul from mortal man.
  - Wreath- Victory.
  - Wreath on Skull- Victory of death over life.
  - Wheat Strands or Sheaves- The divine harvest.

**The Funeral Service Association of BC  
invites all CCABC members to attend their  
Annual Golf Tournament**

**Friday, August 24, 2007  
Greenacres Golf Club, Richmond, BC  
Full tournament package: \$145.00**



**To register call the FSABC at 1-800-665-3899 or e-mail [info@bcfunerals.com](mailto:info@bcfunerals.com)**